



DW-HL528S

M-Cascade system ULT freezer that consists of two stages cascade cooling technology with absolute hydrocarbon refrigerant, which are R290 and R170 as natural gas. The inverter compressors programmed to help energy saving under long period preservation or provide fast temperature recovery while frequently door open to maintain specimens liveness.



Energy consumption



Pulling down to -80°C



Temp. recovery after door opened for 1 min

*Typical freezer data based on internal testing with freezer set point at -80°C and ambient temperature at 25°C.

● Features



Cascade system
Two stages cascade system



Touch screen
10" LCD touch screen



Hydrocarbon refrigerant
Environment-friendly natural gas



Inverter technology
Two inverter compressors



Vacuum insulation
VIP insulation foaming



Alarms system
10 kinds of alarm functions

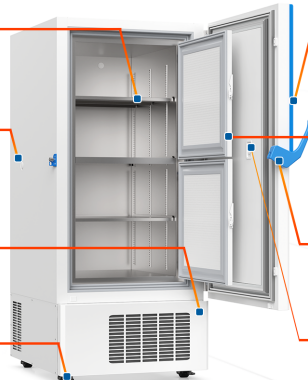
● Structure

304 stainless steel interior

Access port

Circuit breaker for electrical protection

Heavy duty casters with leveling feet



Built-in data logger with USB port

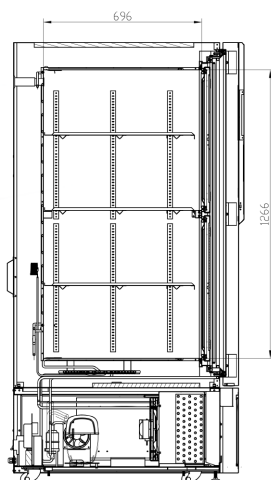
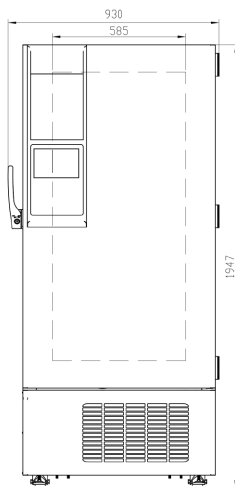
Insulated inner doors

Ergonomic design handle

Heated vacuum relief port

● Dimensions

● Specification



-86°C Ultra-low Temperature Freezer	
Model	DW-HL528S
Power supply(V/HZ)	110~230/50~60
Capacity	528L/18.7Cu.Ft.
Internal size (W*D*H) mm/Inch	585*696*1266/23.0*27.4*49.8
External size (W*D*H) mm/Inch	930*1041*1947/36.6*41.0*76.7
Package size (W*D*H) mm/Inch	1035*1165*2158/40.7*45.9*85.0
NW/GW (kgs)	260/350 (wood packing)
Performance	
Temperature range	-40~-86°C
Ambient temperature	16~32°C
Cooling performance	-86°C
Climate class	N
Controller	Microprocessor
Display	10" HD Intelligent touch screen
Refrigeration	
Compressors	2pcs
Cooling method	Direct cooling
Defrost mode	Manual
Refrigerants	High stage: R290, Low stage: R170
Insulation thickness(mm)	L/R: 130, B: 130
Construction	
External material	Cold rolled steel
Inner material	Spray liner/Stainless steel
Shelves	3(stainless steel)
Access test port	2pcs. Ø 25 mm
Casters	4+(2 leveling feet)
Data Logging/ Interval /Recording time	USB/Record every 5 minutes/10 years
Interface	Remote alarm contact, RS485
Backup battery	Yes
Alarms	
Temperature	High/Low temperature, high ambient temperature
Electrical	Power failure, low battery, battery power detection failure
System	Sensor failure, communication error, condenser overheating, door ajar
Accessories	
Freezer Rack Model	ZKL304-552B-CT
Freezer Rack/Box (Quantity)	16/400
Electrical Data	
Power supply(V/HZ)	110-230V/50&60Hz
Rated current (A)	9.09A

● Options

Cascade models support following optional features:

- Modbus protocol for data transfer
- Card access or finger print access
- Comform to 21 CFR 11 regulation
- CO2 back up system
- Inkless temperature chart recorder
- Racks & Boxes & Tubes